



C:VISION

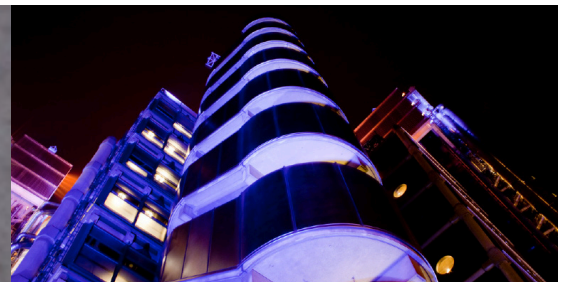
July 2011

Concordia Consultancy Ltd presents our 8th Newsletter, bringing you Company and Market News. Please visit our website at www.concordiaconsultancy.com

NEW LONDON OFFICE

Concordia's Head Office has moved to larger premises at 25-26 Lime Street, London, EC3M 7HR. Our telephone and efax numbers remain the same. The Lloyd's Building and Leadenhall Market are two of the iconic landmarks of the City that are found within a very short walk of our new office.

To update your address book automatically, [click here](#).



RECENT APPOINTMENTS



Sam Koh
Managing Director
Concordia Asia Pacific
Singapore



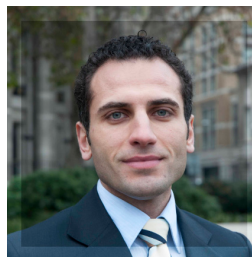
Emma Taeger
PA to the Chairman
London



Ed Hillier
Senior Consultant
London



Peijun Sun
Assistant Consultant
London



Mahir Hamurcu
Consultant
London



Gary Lim
Assistant Consultant
Singapore

EUROPE

- From our offices in London and Barcelona, we have been actively working on assignments in all major European countries.
- We will shortly be opening an office in Geneva.
- The activities of our Dispute Resolution Service Group are now being handled within **Concordia Legal Ltd** which is also in advanced preparations to become a law firm in the near future.

ASIA PACIFIC

- Sam Koh has joined our Singapore Office as Managing Director.
- Gary Lim joined as Assistant Consultant in Singapore
- We established **Concordia Consultancy (Australia) Pty Ltd** based in Sydney.
- Sam and Gary attended the 10th Anniversary celebrations organised by Lloyd's at Raffles Hotel in Singapore.
- Our associate in Indonesia General Adjusters, together with Paul, attended the East Asian Insurance Congress in Indonesia.



In his capacity as IFAA President, Paul chaired the 2nd Educational Conference of the IFAA in Singapore, held at the AXA University campus.

In November 2010 we held a regional meeting of Concordia Associates in Asia Pacific. Associates attended from: Thailand, New Zealand, Malaysia, Indonesia and Sri Lanka together with Concordia staff from Singapore, Australia and London.



In March 2011 Paul delivered a paper "Risk Management of Claims Management" at the annual claims conference of the Malaysian Insurance Institute in Kuala Lumpur.

- In January 2011 Sam Koh attended the Munich Re regional claims conference in Bangkok.
- Our Associates in New Zealand, TPA have been heavily involved with claims arising from the Christchurch earthquakes.

SCANDINAVIA & NORDIC

- In response to the significant level of work we do for clients in the region we have established a subsidiary in Sweden. Ed Hillier, Senior Consultant, is the deputy Managing Director of **CC Nordic AB**, Stockholm.
- During March 2011 Spencer Clark and Ed attended the Lillehammer Energy Conference in Norway.

MIDDLE EAST & AFRICA

- Co-ordinated from **Concordia Consultancy Mediterranean** in Cyprus, we have been active in Turkey, Cyprus and several countries in Africa including Nigeria, South Africa and Morocco.
- Planning is at an advanced stage for a technical adjusting conference in Istanbul organised with our Associate in Turkey.

AMERICAS

- We have undertaken a number of assignments in the USA, and Canada from Concordia Consultancy (Americas) Inc located in New York.
- In Latin America we have been involved on cases and projects in Brazil, Peru, Chile, Argentina and Mexico.
- In 2010 we welcomed W.Moller as our Associate in Peru.
- With our Associate in Chile IIS we established the **Concordia Chile Consortium** to deal with claims and audits arising from the earthquake.

PROFESSIONAL NEWS



After 2 years representing the Chartered Institute of Loss Adjusters as President of the IFAA, Paul handed over, at the AGM in London on 13th April, to Darlington Mgbodikwe of ILAN, Nigeria.

The next IFAA Educational Conference is planned to be held in London on the 12th October 2011. For further information please visit www.adjustersworldwide.org



Concordia is a signatory to the Chartered Insurance Institute's Aldermanbury Declaration, which sets out a clear vision for a new era of professionalism in insurance, with a framework of professional standards.

RECENT PAPERS & ARTICLES

Recent papers and articles presented by Concordia personnel include:

Subsea Acoustic Positioning, Old Library, Lloyd's London, Ed Hillier

Insurance & Risk Management opportunities in China, Institute of Risk Management Journal, Paul May

MSc Insurance & Risk Management papers at Cass Business School, London, Spencer Clark

Claims Management and the role of the Loss Adjuster, Colombo, Insurance Institute of Sri Lanka, Paul May

Risk Management of Claims Management at the MII Claims Convention in Kuala Lumpur, Paul May

International Loss Adjusting, Cass Business School, London, Paul May

Many articles are available to view in full at www.concordiaconsultancy.com/news

INTERIM REPORT No. 8



As we enter our 9th year of operation this July, we remain focussed on providing specialised service to clients around the World. Our new office in Lime Street provides us with further scope for growth and places us closer to the heart of the London Market.

We continue to provide personalised professional solutions from our 4 service groups.

Our thanks go to our clients and friends for their continuing support.

Paul May, Chairman



Concordia Consultancy can now be found on LinkedIn the professional social networking website. To 'follow' us and receive updates please visit www.linkedin.com/company/concordia-consultancy-ltd.



In recognition of the multi-national work that we are involved with, Concordia attended and exhibited at the 2011 conference of the UK Association of Insurance and Risk Managers in Bournemouth.



GIVING AND SUPPORT

During the last few months Concordia has continued to support charities and projects.

- Ed Hillier came 3rd in the charity "fun run" at Airmic 2011 in aid of Marie Curie Cancer Care.
- Furnistore and Kids Company received donations and support as our Christmas charity.
- St Catherine's Hospice in Caterham, Surrey have also received continued support from Concordia
- Concordia staff entered in the Vertical Rush climb of Tower 42 in aid of Shelter.



Future activities include Concordia staff participating in the Shine half marathon in October. Concordia has also recently supported fund raising for these charities :-

